

CERTIFICATE

Product name: Car washing machine

Product model: _____

examination clerk:  _____

THE PRODUCT HAS PASSED THE INSPECTION AND MEETS THE REQUIREMENTS OF THE FACTORY STANDARD. IT IS ALLOWED TO LEAVE THE FACTORY.

Warranty Card

User name	_____	contact number	_____
postal address	_____		
E-mail	_____	distributor	_____
Place of purchase	Purchase date _____		
Cause of failure	_____		
Maintenance record	_____		

LITHIUM BATTERY WATER GUN FOR CAR WASHING

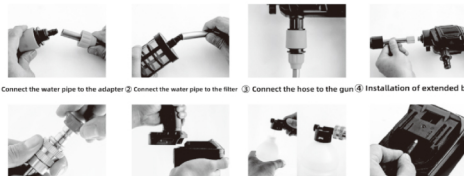


Product Profile

This product adopts the integrated design pressure, flexible use, flexible battery and foam pot, and can improve the self washing experience for users. The product can be carried with the car, and can be used whenever and wherever possible, saving precious time for you.

Product Features

1. The dignified pistol style ensures the beauty and comfort of the handle.
2. Detachable rechargeable lithium battery design: internal use of six lithium battery pack, to provide high-pressure water gun High power supply guarantee.
3. Water pipe connection: adopt flexible socket, easy and firm installation.
4. Intelligent charging protection: when the charger is charging, the charger will display red light, when it is fully charged, the charger will automatically Stop charging and display green light.
5. foam function, the car wash liquid into the foam pot, need to add water blending, install a spray of the whole car can be. To achieve the effect of cleaning the whole car.
6. This product is convenient and simple, and has a wide range of applications, such as automobile, electric car, air conditioner, medicine, watering plants, etc No plug-in power supply, suitable for all kinds of water sources, practical and convenient.



① Connect the water pipe to the adapter ② Connect the water pipe to the filter ③ Connect the hose to the gun ④ Installation of extended barrel

⑤ Installation of multifunctional sprinker ⑥ Lithium battery installation (with charger) ⑦ Demolition and installation of foam kettle ⑧ How to use the charger

Product Structure



Extension bar

Charger

Foam pot

Intake pipe and filter

Scalloped spear head

Matters Needing Attention

1. When the extension rod is connected with the gun body, it should be installed in place. After connection, please check whether there is leakage at the connection. If there is water leakage, please re-install and rotate the extension rod and gun body in place.
2. In the process of use, if the water outlet of the nozzle is not smooth, remove the nozzle and clean up the foreign matters to prevent spraying the motor is damaged due to the blockage of the head.
3. In order to prolong the service life of the battery, please keep charging once a month in case of infrequent use.

Warranty Instructions

1. Please keep the warranty card properly as the warranty certificate. No replacement will be given if it is lost.
2. The product shall be confirmed within one year from the date of purchase (subject to the storage, transportation and use rules). If the product cannot be used normally due to its own quality problems, the user can send it with the card. For the copy of invoice or invoice, contact our company or local distributor, and we are responsible for "Three Guarantees".
3. Due to the user's improper storage or use of the product damage, as well as the user's invoice, warranty. If the product model on the card does not match the model of the product to be repaired, it does not belong to the scope of warranty, but can be repaired. Pay for repairs.